

NORTH KINGSTON, RHODE ISLAND

Edward Rowe
A R C H I T E C T S

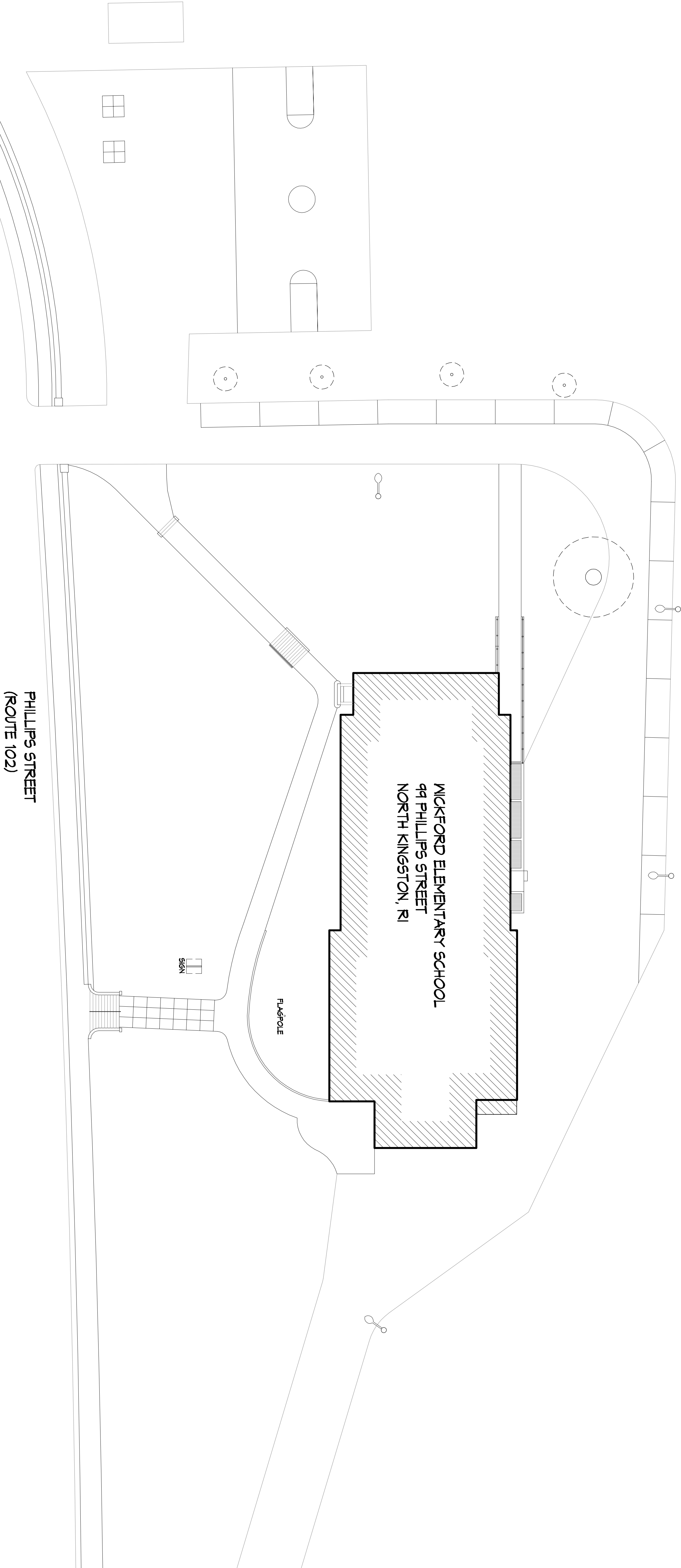
115 Cedar Street
Providence, RI 02903-1082
Massachusetts Office
e-mail: rowse@rowsearch.com

(401) 331-9270
Fax (401) 331-9270
(508) 252-5446

OWNERSHIP AND USE OF DOCUMENTS, DRAWINGS AND SPECIFICATIONS AS INSTRUMENTS OF PROFESSIONAL SERVICE ARE THE PROPERTY OF EDWARD ROWE ARCHITECTS. THESE DOCUMENTS ARE NOT TO BE USED IN WHOLE OR IN PART FOR ANY OTHER PROJECTS OR PURPOSES, OR BY ANY OTHER PARTIES THAN THOSE SPECIFICALLY AUTHORIZED BY EDWARD ROWE ARCHITECTS. EXPRESS AUTHORIZATION OF THE ARCHITECT

GENERAL NOTES

1. EXISTING CONDITIONS WERE OBTAINED FROM DRAWINGS AND FIELD SURVEY. THE CONTRACTOR SHALL VERIFY ALL CONDITIONS AND REPORT ANY DISCREPANCIES TO THE ARCHITECT PRIOR TO START OF CONSTRUCTION. CONTRACTOR TO VERIFY AND COORDINATE ALL EXISTING CONDITIONS WITH NEW WORK PRIOR TO BEGIN CONSTRUCTION OR ANY VARIATION.
2. CONTRACTOR SHALL VISIT SITE PRIOR TO BEGIN WORK SO AS TO SATISFY HIMSELF AS TO THE NATURE AND LOCATION OF THE WORK. CONTRACTOR TO NOTE THE CHARACTER, QUALITY, LOCATION, AND CONDITION OF ALL EXISTING STRUCTURES, UTILITIES, AND EQUIPMENT. THE CONTRACTOR SHALL BE RESPONSIBLE FOR OBTAINING ALL NECESSARY PERMITS AND APPROVALS FOR THE WORK AND FOR THE PROTECTION OF ALL UTILITIES AND EQUIPMENT. CONTRACTOR SHALL BE RESPONSIBLE FOR THE PROTECTION OF ALL UTILITIES AND EQUIPMENT.
3. DRAWINGS DO NOT INCLUDE NECESSARY COMPONENTS FOR CONSTRUCTION SAFETY.



SITE PLAN
EXISTING CONDITIONS

C1.00