

The Town of North Kingstown Invites the Public

To join us for the . . .

WICKFORD WALKING WORKSHOP

Saturday January 17, 2015
Noon to 4PM

Starts at
55 Brown St. 12:00 Sharp ➡ Walking tour finishes at ➡ St. Paul's
Parish Hall

Participants will be asked to help create a renewed vision for
making Wickford an economic driver for the entire town.

Refreshments will be provided by Pranzi Catering



Wickford Walking Workshop

held Saturday
January 17th

Frigid temperatures! About 20 degrees

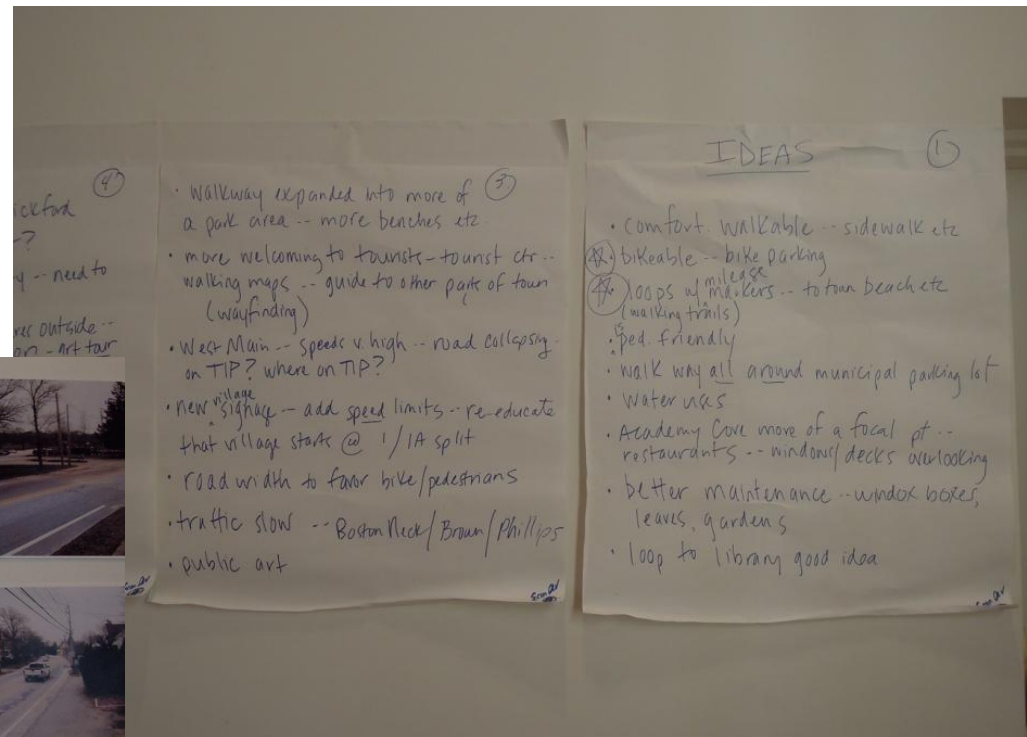
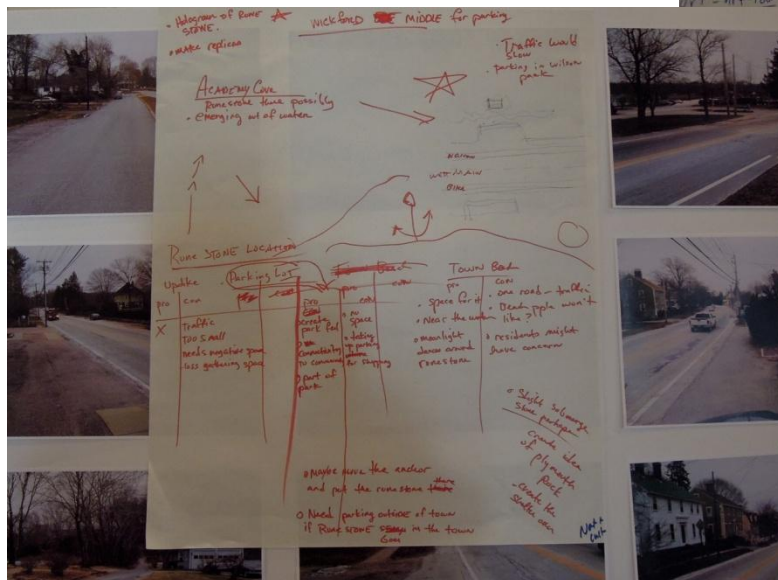
Wickford Workshop

- Event was organized by:
 - Planning Department
 - EDAB/WEDAB
 - Wil Gates
 - Don Leighton
- Catering was donated by Pranzi Catering
- Over 50 people attended!
- Involved a walk from the Town Hall Annex through the back parking lot, down Brown Street to West Main/Main Street, up West Main Street, and down Main Street to St. Paul's for discussion and design

At St. Paul's

Two pieces to the workshop:

- 1. Wish List
- 2. Design Event



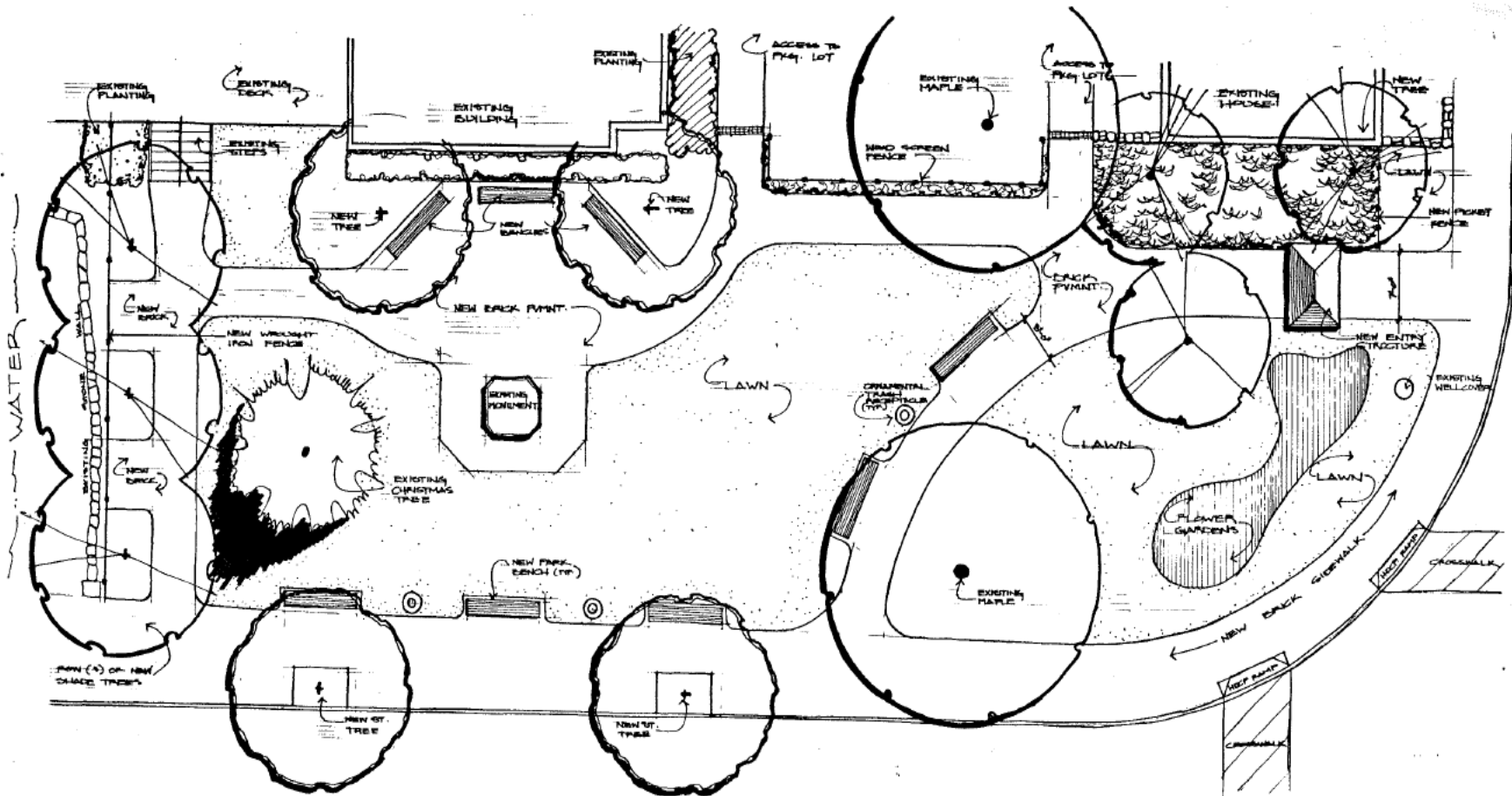
Big Ideas



in Streets, Wickford, R. I.



- Promote the POSITIVES!
- Keep a balance of a vibrant community and quality of life, residents vs. businesses
- Continue to preserve historic charm
- Connectivity extremely important
- Rune Stone location also a concern



UPDIKE PARK - WICKFORD, R.I.

• EARLY DEVELOPMENT CONCEPTS •

AS PREPARED BY THE UPDIKE PARK PLAN COMMITTEE 4-6-79



Promote the Positives



- Wickford has much to offer in many ways

- Water/harbor an asset to develop

- Lots of existing opportunities which can be expanded



Connectivity

- ***Connectivity to surroundings***
 - Add signage for existing library loop
 - Promote open space connectivity
 - Route 1 entrance not welcoming
 - West Main and Phillips both need infrastructure attention
 - Crosswalks
- ***Connectivity to existing businesses***
 - Indoor/outdoor opportunities including sidewalk seating
- ***Connectivity to other agencies***
 - Public art, art tours, Wickford Art Association
 - Parades
 - Concerts
 - RIPTA/Wickford Junction
- ***Connectivity to water***
 - Water taxi
 - Docks
 - Business focal point

Early Action Items

- Window boxes, landscaping, gardens
- Promoting biking and walking loops
- Promote food trucks
- Improve signage
- Encourage outdoor seating



Long Term Goals

Continual improvement
of water access

- “Harbor Walk”
- Improvements to the walking area
- Park like
- Information kiosk for boating visitors
- Child friendly features
- Landscaping
- Clear connections from Brown Street to water
- Public docking/additional floating docks/tours



Design Event

Second part of
workshop was led
by Wil Gates and
Don Leighton

Opportunity for
attendees to
design Wickford!

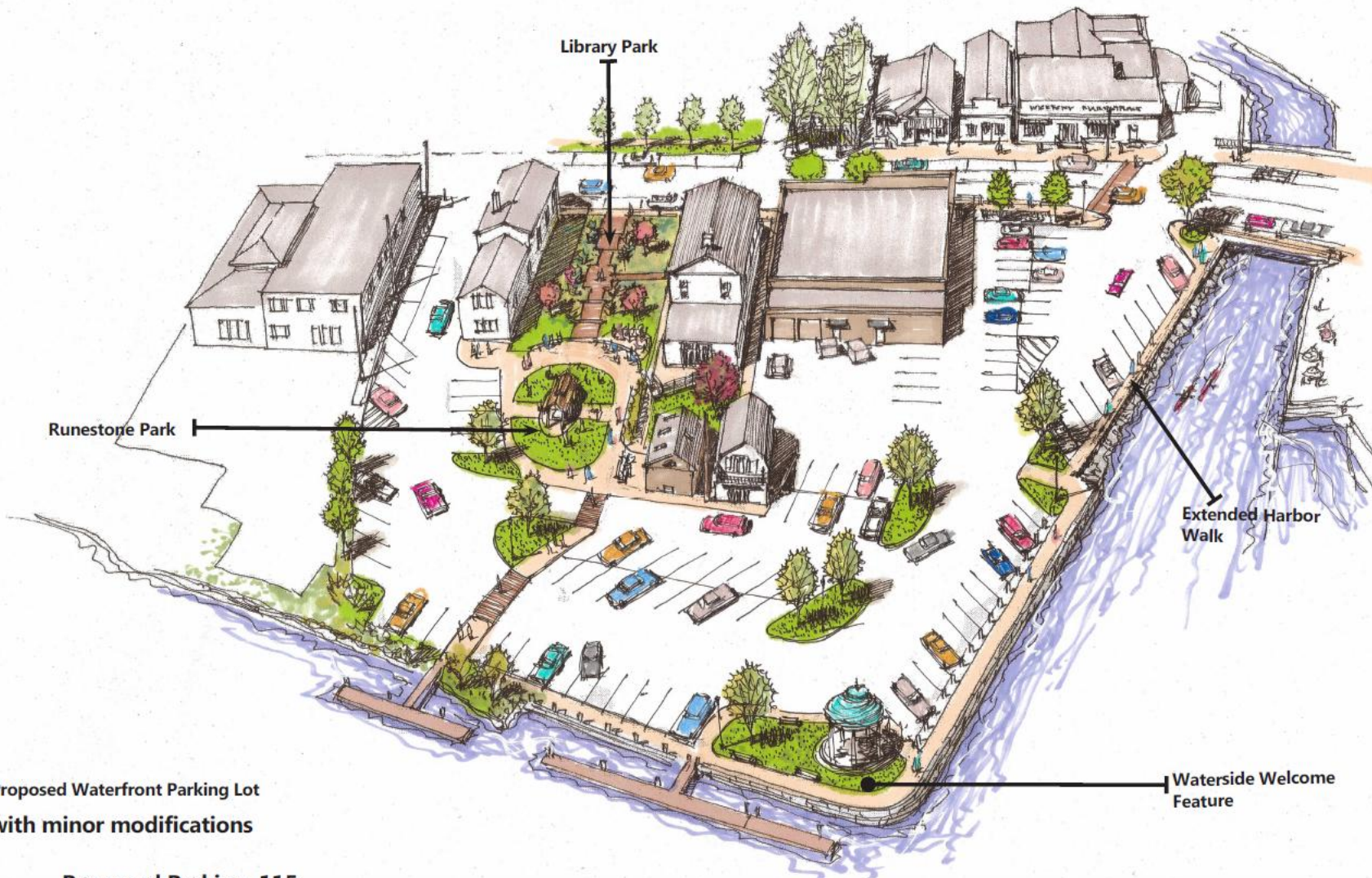




Existing Waterfront Parking Lot

Existing Parking 126

Wickford Walking Workshop JAN ~ 2015



Proposed Waterfront Parking Lot
with minor modifications

Proposed Parking 115

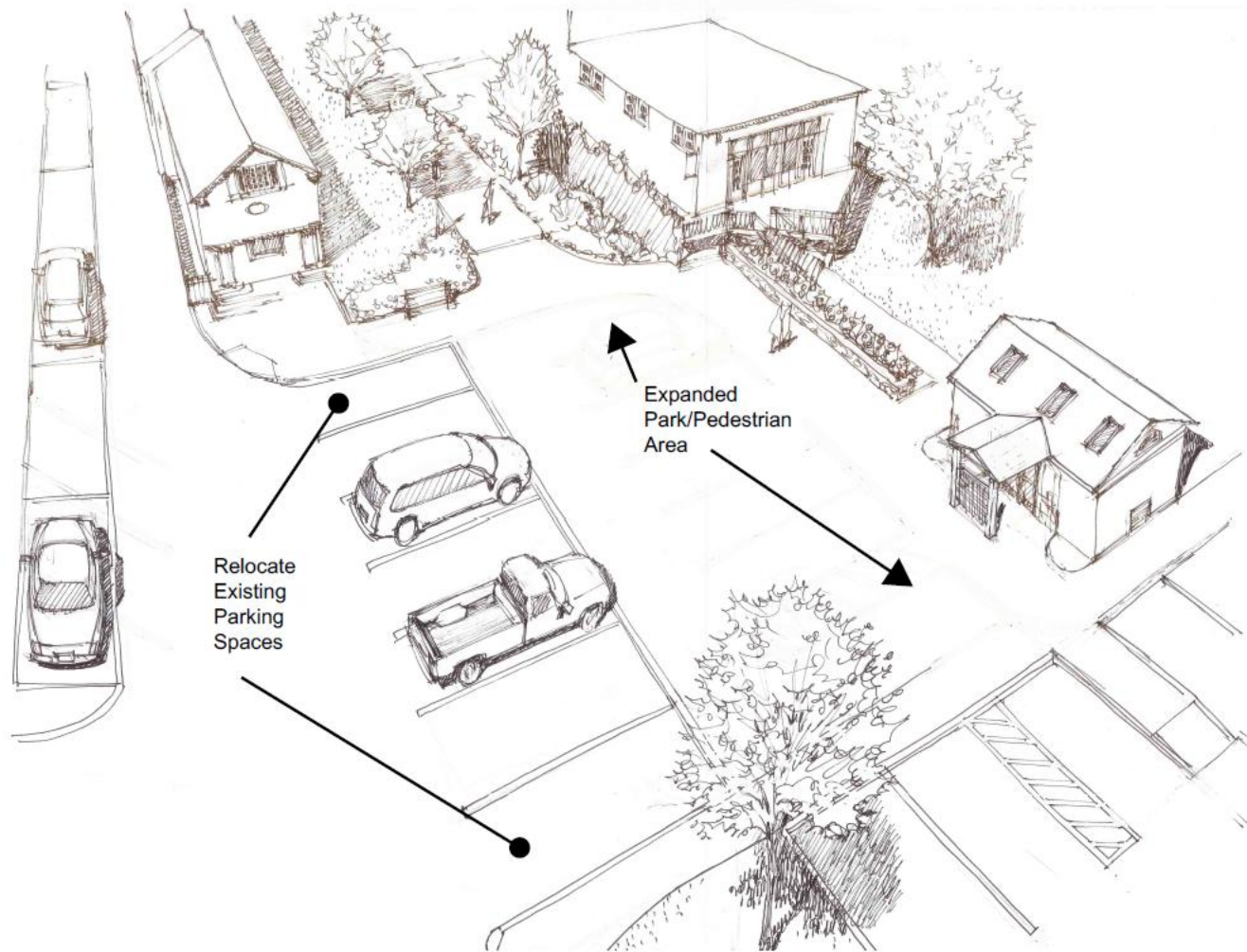
Wickford Walking Workshop JAN ~ 2015

BETA Group, Inc.
Engineers • Planners • Landscape Architects
Lincoln, RI • Norwood, MA • Hartford, CT



**Park Expansion at 55 Brown St.
OPTION ONE - Runestone Location**

Wickford Walking Workshop JAN ~ 2015



Wickford Walking Workshop JAN ~ 2015

BETA Group, Inc.
Engineers • Planners • Landscape Architects
Lincoln, RI • Norwood, MA • Hartford, CT



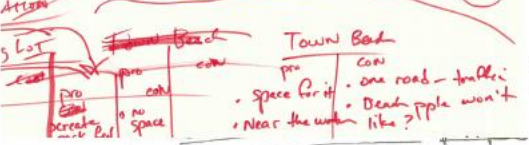
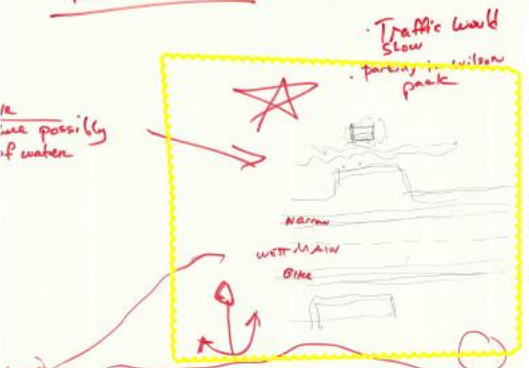
Proposed Waterfront Parking Lot
major modifications

Proposed Parking 91

Wickford Walking Workshop JAN ~ 2015

BETA Group, Inc.
Engineers • Planners • Landscape Architects
Lincoln, RI • Norwood, MA • Hartford, CT

★ WICK BAYED ~~THE~~ MIDDLE for parking

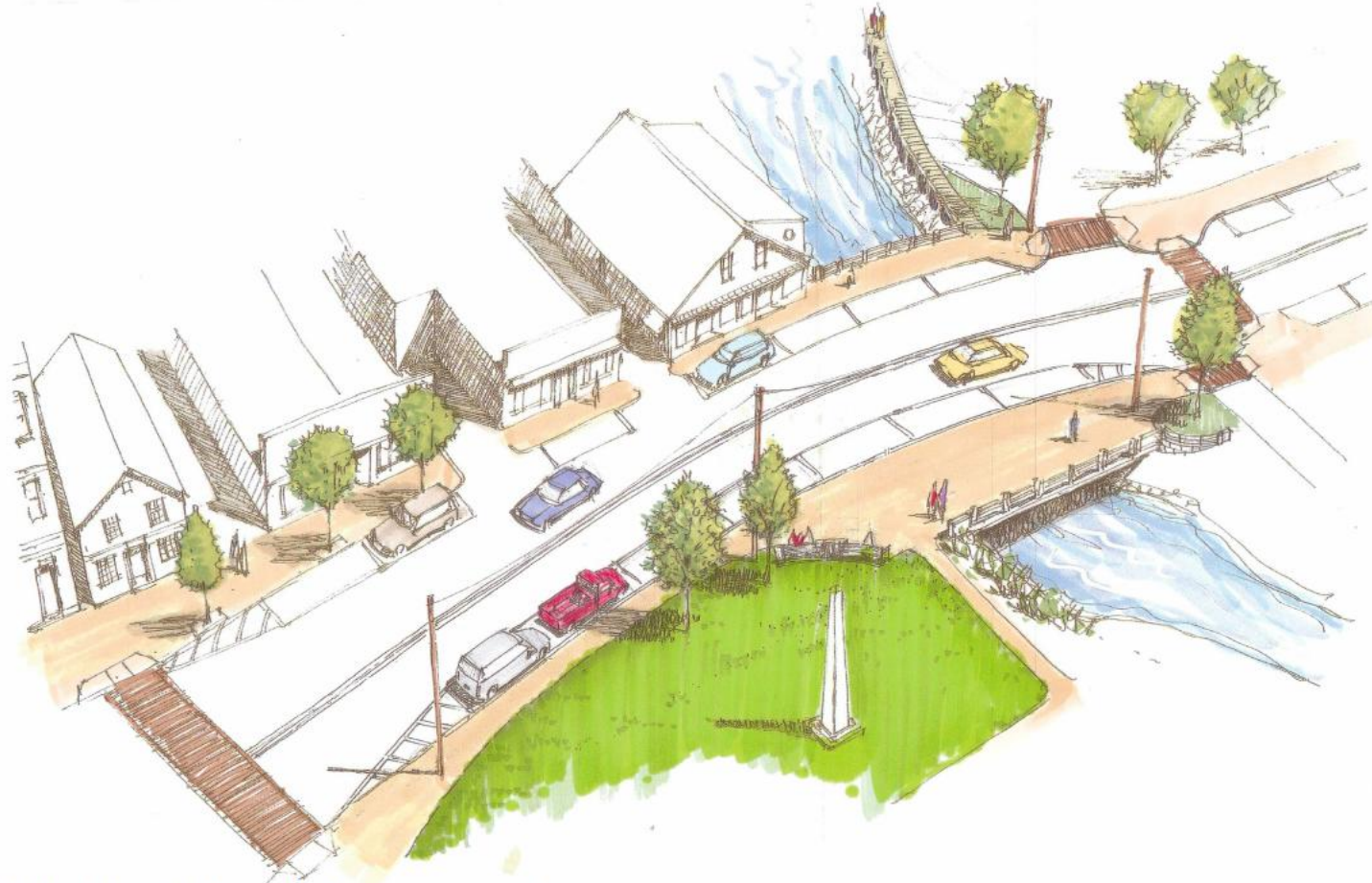


WWW Jan 2015

WEST MAIN STREET GATEWAY
w/ RUNE STONE OVERLOOK &
STREETSCAPE IMPROVEMENTS

BETA Group, Inc.
Engineers • Planners • Landscape Architects
Lincoln, RI • Norwood, MA • Hartford, CT

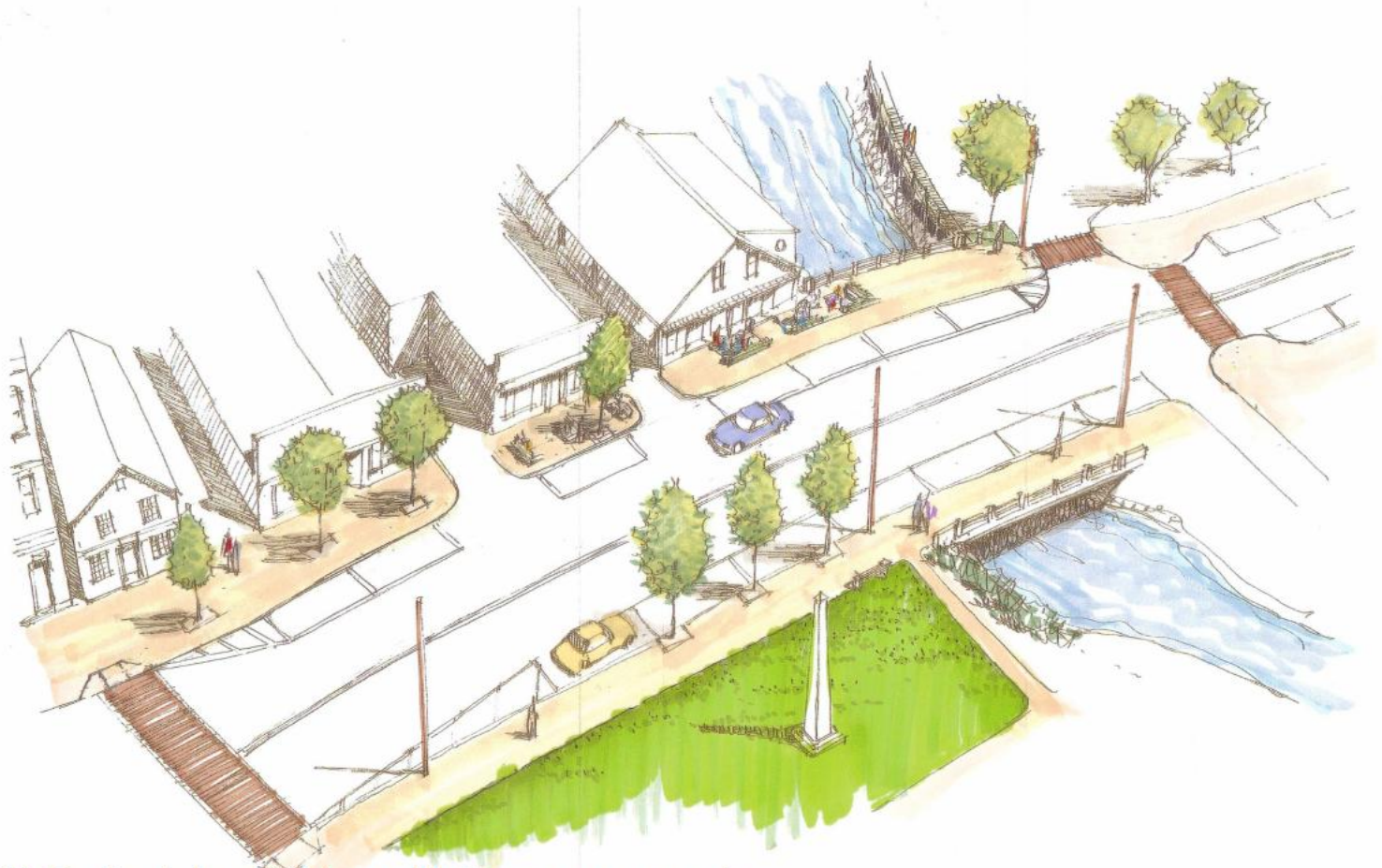
Lincoln, RI • Norwood, MA • Hartford, CT



**Brown St Pedestrian/Sidewalk Improvements
WEST SIDE**

Wickford Walking Workshop JAN ~ 2015

BETA Group, Inc.
Engineers • Planners • Landscape Architects
Lincoln, RI • Norwood, MA • Hartford, CT



Brown St Pedestrian/Sidewalk Improvements EAST SIDE

Wickford Walking Workshop JAN ~ 2015

BETA Group, Inc.
Engineers • Planners • Landscape Architects
Lincoln, RI • Norwood, MA • Hartford, CT

What's Next?

- Final determination of Rune Stone location
- Incorporation of WWW work into comp plan
- Town staff to continue West Main/Phillips push at state level (RI DOT)
- Move forward with early action items



Thank you!

Nicole LaFontaine, Director, Nlafontaine@northkingstown.org