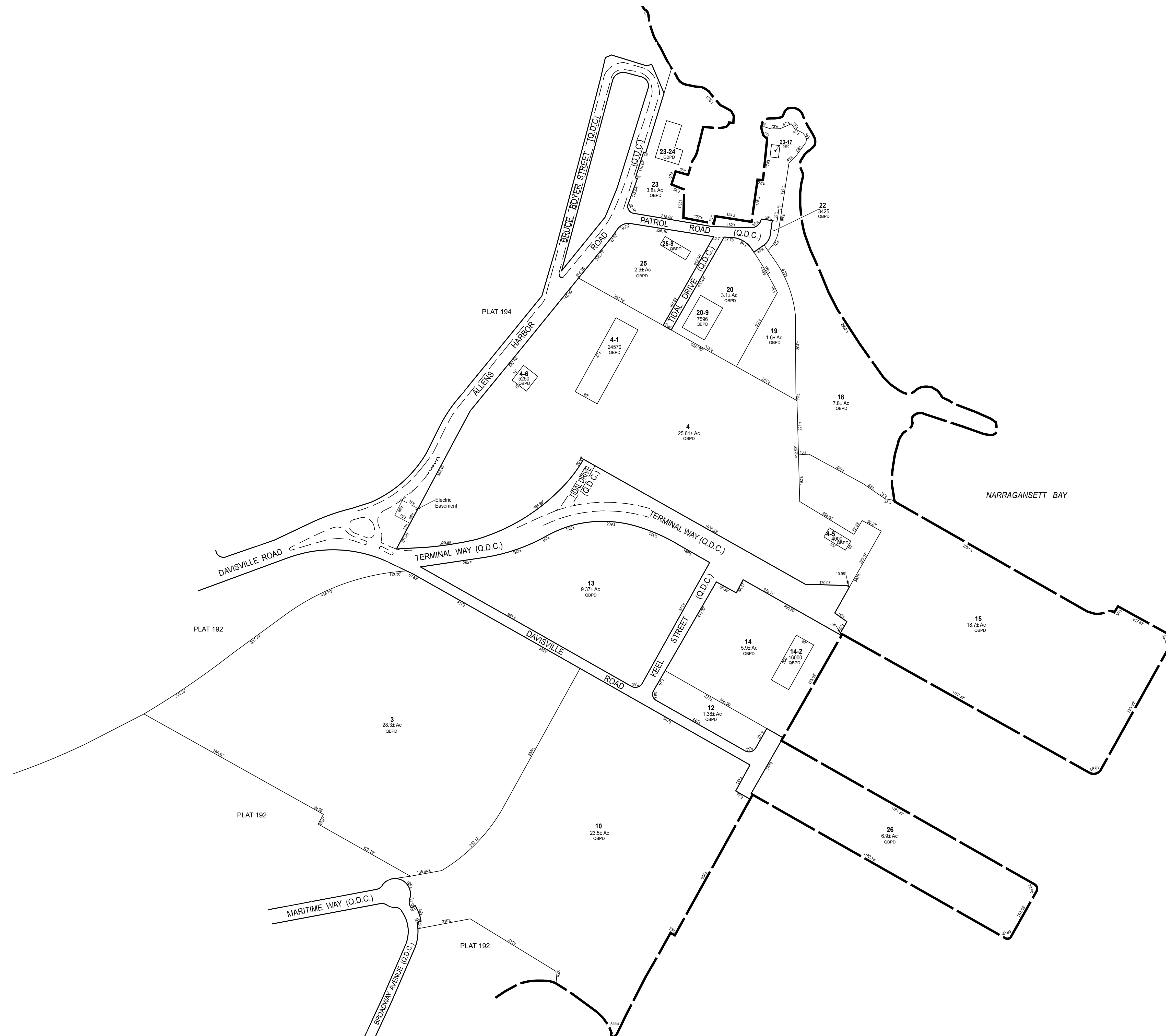


NOTE: (Q.D.C.) INDICATES PROPERTY OWNED BY THE QUONSET DEVELOPMENT CORPORATION WHICH THE QUONSET DEVELOPMENT CORPORATION HAS NOTIFIED THE TOWN IT INTENDS TO USE FOR ROADWAY PURPOSES.



THIS MAP IS FOR ASSESSMENT PURPOSES. IT IS NOT VALID FOR LEGAL DESCRIPTION OR CONVEYANCE.

THE HORIZONTAL DATUM IS THE RHODE ISLAND STATE PLANE COORDINATE SYSTEM, NAD 83.

REVISED & REPRINTED BY

CAI Technologies
Precision Mapping. Geospatial Solutions.
11 Pleasant Street, Littleton, NH 03561
800.322.4540 - www.cai-tech.com

LEGEND

AREA SURVEYED	-----	Ac	RIGHT OF WAY/ACCESS	---
PARCEL NUMBER	-----	14	COMMON OWNERSHIP	---
RECORD DIMENSION	-----	100'	OR	---
ZONING DISTRICT	-----	RR	WATER	---

SCALE: 1" = 200'

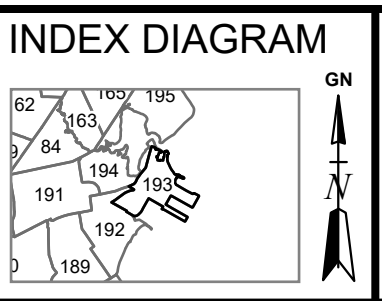
FEET: 200 100 0 200 400 600
METERS: 50 25 0 50 100 150

REVISED TO: JANUARY 1, 2025

PROPERTY MAPS

NORTH KINGSTOWN

RHODE ISLAND



MAP NO.

193